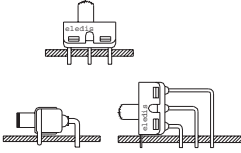




## SERIES 7A

- Slide switches



## AGENCY APPROVALS

**RU** File N° E195524  
**C RU** File N° E195524

## CHARACTERISTICS

- Snap action mechanics for long life.
- Miniature.
- Numerous optional mountings.

## SPECIFICATIONS

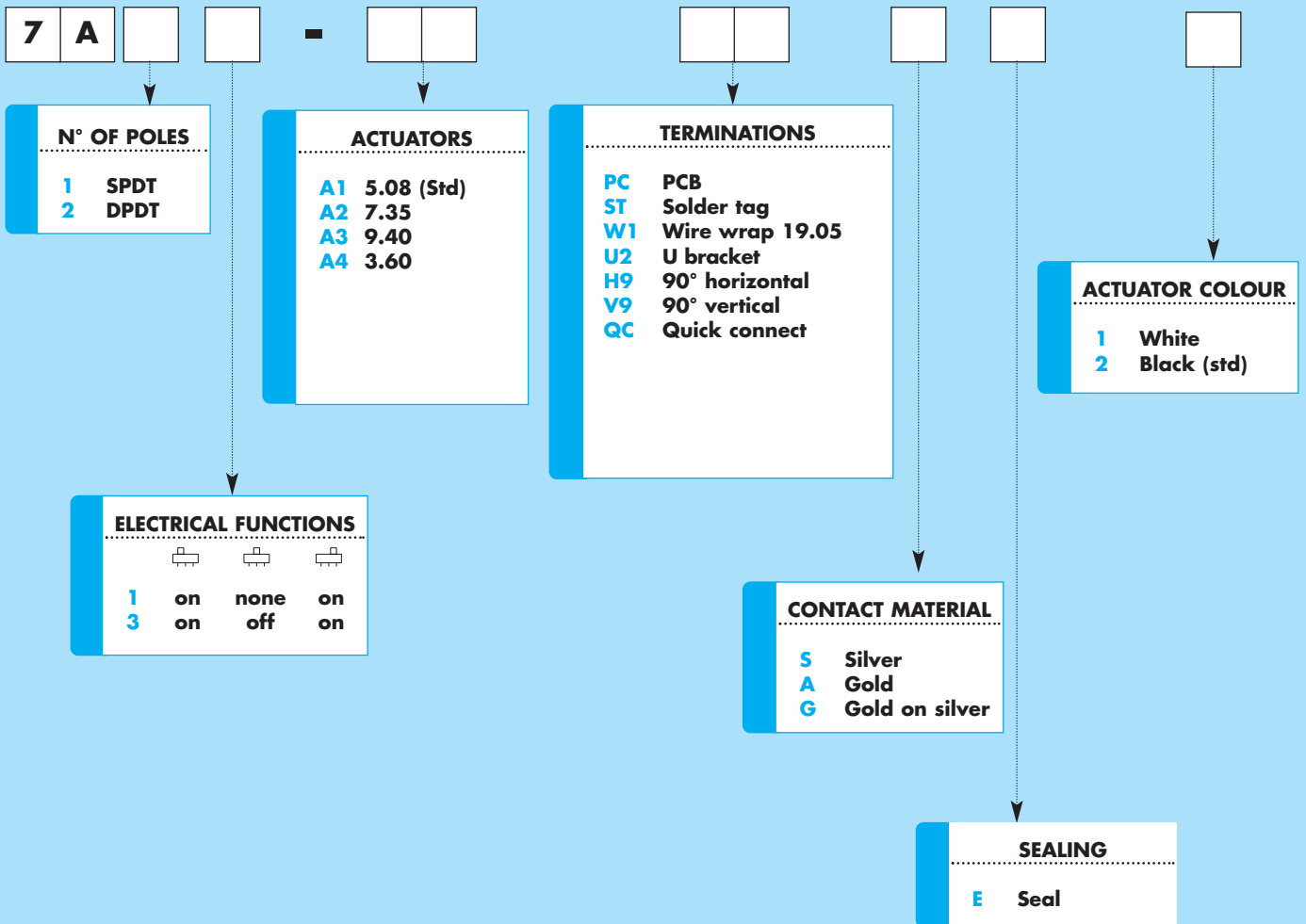
**Contact Rating:** **S** (silver) - 5A @ 120 VAC or 28 VDC - 2A with resistive load @ 250 VAC - **A** (gold) - 0.4 VA @ 20 VAC or DC max - **G** (gold on silver)  
**Electrical life:** 30,000 actuations at full load  
**Contact Resistance:** 10 mΩ max. initial  
**Insulation Resistance:** 1000 MΩ min.  
**Dielectric Strength:** 1500 VRMS @ sea level  
**Operating Temperature:** -30°C to 85°C

## MATERIALS

**Case:** dially phthalate (DAP)  
**Housing:** Stainless steel  
**Slide handle:** Nylon  
**Contacts:** Coin silver, silver plated  
**Center Contact & Terminals:** Copper alloy, silver plated

SLIDE SWITCHES

## HOW TO ORDER



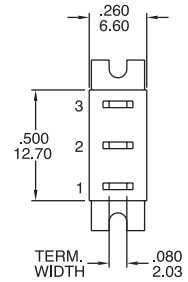
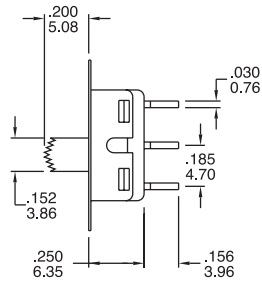
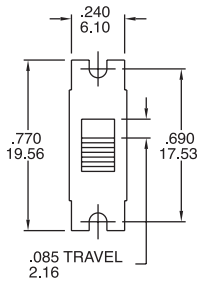
## SERIES 7A

### ELECTRICAL FUNCTIONS

### DIMENSIONS

SPDT	Type		
1	on	none	on
3	on	off	on
	2-1	open	2-3

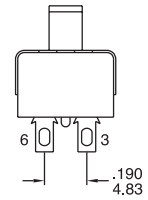
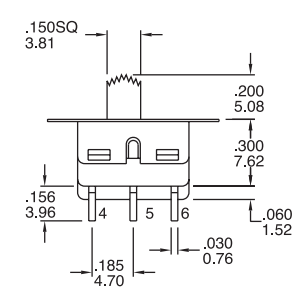
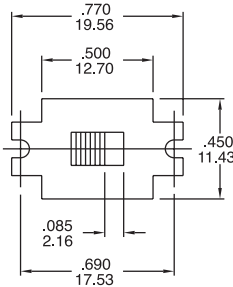
2 Comm.



Part N° shown: 7A11-A1STSE2

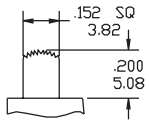
DPDT	Type		
1	on	none	on
3	on	off	on
	2-1,5-4	open	2-3,5-6

2 Comm.    5 Comm.



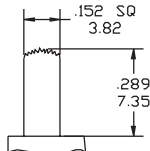
Part N° shown: 7A21-A1STSE2

### ACTUATORS

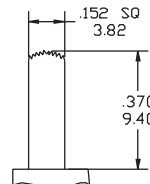


A1 (Std)

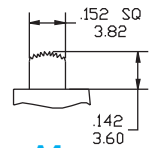
Standard Supply Black



A2



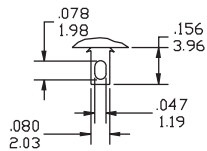
A3



A4

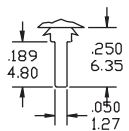
### TERMINATIONS

#### ST



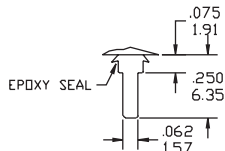
THK 0.76 (.030)

#### PC



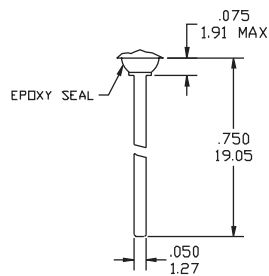
THK 0.76 (.030)

#### QC



THK 0.76 (.030)

#### W1



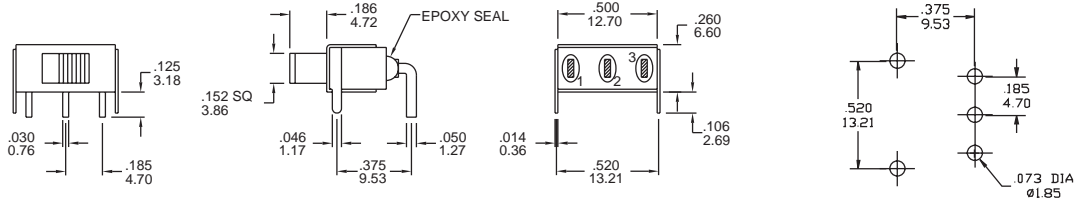
THK 0.76 (.030)



SERIES 7A

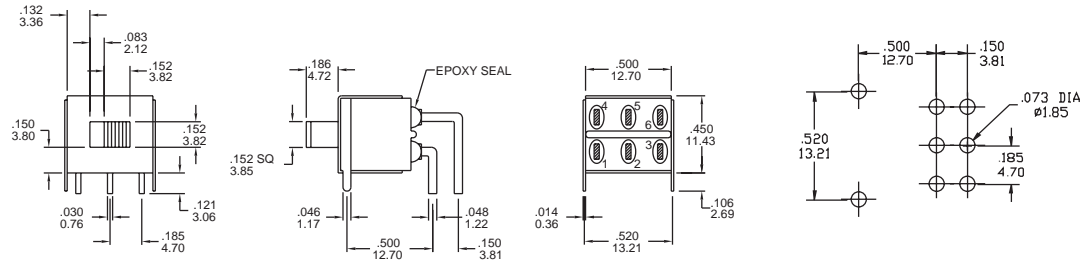
TERMINATIONS

H9  
SPDT



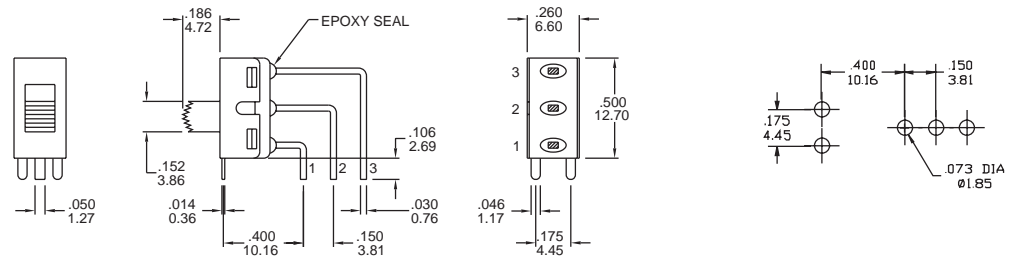
Part N° shown: 7A11-A1H9AE2

H9  
DPDT



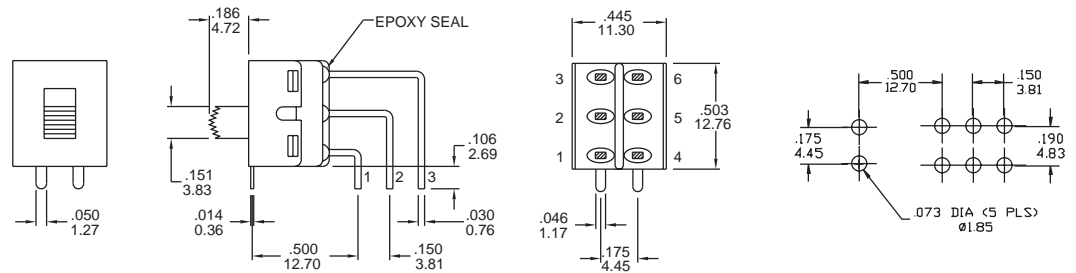
Part N° shown: 7A21-A1H9AE2

V9  
SPDT



Part N° shown: 7A11-A1V9AE2

V9  
DPDT

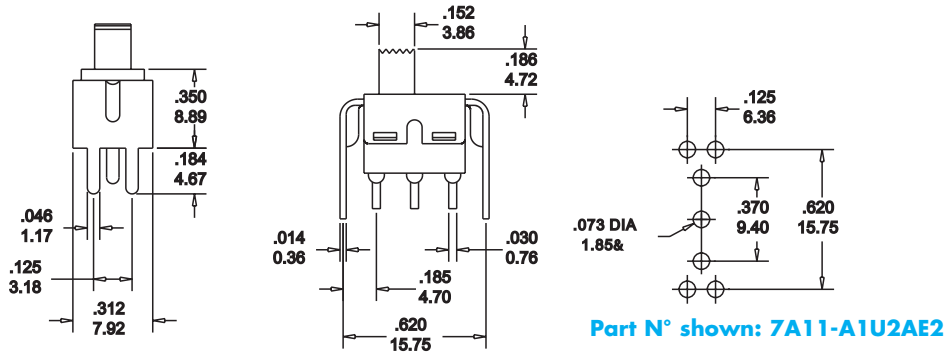


Part N° shown: 7A21-A1V9AE2

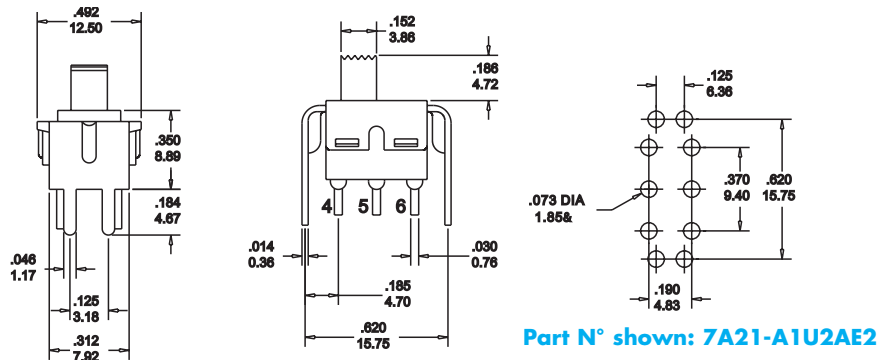
## SERIES 7A

### TERMINATIONS

#### U2 SPDT



#### U2 DPDT



### CONTACT MATERIALS

### CONTACT RATINGS

- S** **Moving Contacts:** coin silver  
**Terminals:** copper alloy, silver plated  
**Rating:** 2 Amps with resistive load @ 250 VAC  
5 Amps with resistive load @ 125 VAC or 28 VDC
- A** **Moving Contacts:** copper alloy with gold plating over nickel plating  
**Terminals:** copper alloy with gold plating over nickel plating  
**Rating:** 0.4 Volts/Amps max @ 20 Volts max (AC or DC)
- G** **Moving Contacts:** gold plating over silver  
**End Terminals:** gold plating over silver  
**Center Terminals:** gold plating over copper alloy, silver plated  
**Note:** G option used for either "high" (2 Amps @ 250 VAC) or "low" (0.4 Volts/Amps max) contact rating (one exclude the other)

### PACKAGING

Transparent Trays 15x21x4 cm



Each box contains  
Series 7A1x 400 pcs  
7A2x 200 pcs

### MARKING (on products)

The switches are individually marked with the following information:

- Side 1** TRADE MARK  
SERIES AND MODEL  
DATE CODE
- Side 2** RATING  
CONTACTS

Note: Not all information may be available on some products.

### LABELLING (on packaging)

The label on each tray gives full information on the products contained.

P/N: EL.FNC.: Q.TY: DATE CODE:	
Made in Taiwan	
Remarks	

A Bar code indicating Model, Quantity, Date Code enables easy traceability.