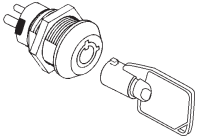


SERIES KS TH2

- Miniature ON-OFF Key-Lock Switch
- Short body



CHARACTERISTICS

- Short body
- Tubular Key
- 200 combinations
- 4 Pin Tumbler Mechanism

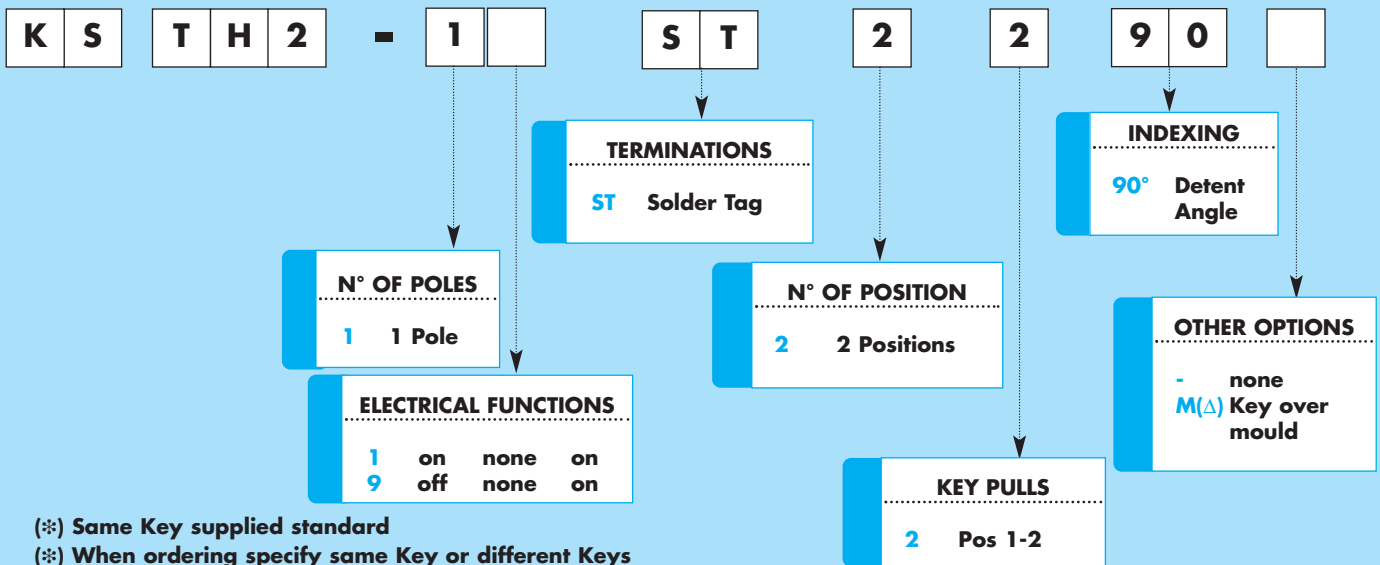
SPECIFICATIONS

Contact Rating: 1A @ 125 VAC or 28 VDC - 0,5A @ 250 VAC
Contact Resistance: <10 m Ω
Insulation Resistance: 10⁷ Ω min.
Dielectric Strength: 1000 V RMS Min @ sea level
Electric Life: 6.000 make & break cycles @ full load

MATERIALS

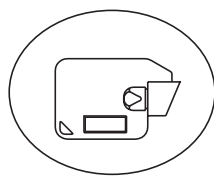
Lock Housing: Zinc alloy Die-cast
Cylinder: Zinc alloy Die-cast
Keys: Bright chrome plated
Contacts: Silver plated
Terminals: Silver Plated

HOW TO ORDER

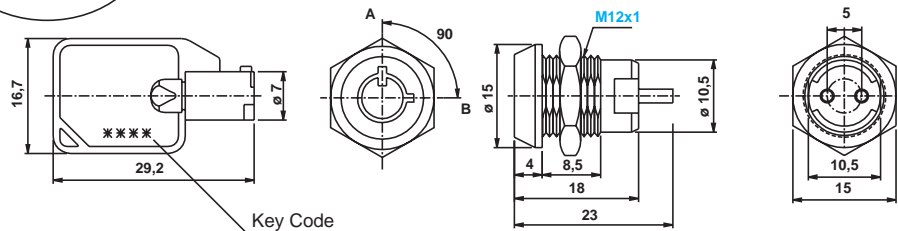


(*) Same Key supplied standard
 (*) When ordering specify same Key or different Keys
 Min Qty per lot apply for different Keys - Please enquire -

(Δ) Min qty required



Over - Mould option



MODELS AVAILABLE SYMBOL KEY PULL

KS TH2-11ST2290		Pos 1-2
KS TH2-19ST2290		Pos 1-2

LEGEND

—	off	—	no key pull
●	on	○	key pull
△	mom		

